

AlpineClad



Exterior Panelling



AlpineClad combines the beauty of real wood with structural strength and economy.

IPL AlpineClad gives the benefits of natural timber with the convenience of a strong easily erected panel cladding system. It is manufactured from renewable plantation grown pine trees, on the West Coast of New Zealand. IPL AlpineClad provides the largest range of decorative plywood claddings available in New Zealand and has been used in a wide variety of buildings including the most sophisticated architecturally designed houses.

AlpineClad exterior panelling comes in three types

- Bandsawn surface with grooves at 100mm or 150mm centres
- Smooth surface with grooves at 100mm or 150mm centres
- Bandsawn only

The design possibilities for AlpineClad are unlimited from the plain bandsawn look that type 3000/6000/7000 gives to board and batten effect of type 1000, 2000, 4000 and 5000 plus the added benefits of versatility, insulation, and bracing qualities.

Manufacturing Standard

AlpineClad is produced to AS/NZ Standard 2269:1994 Plywood-Structural which is audited by the PAA (Plywood Association of Australia).



Type 1000/150
Bandsawn surface, grooved at 150mm centres



Type 2000/100
Smooth surface, grooved at 100mm centres



Type 6000
Bandsawn with no grooves

AlpineClad Range Specifications

Type	Sheet size (mm)	Thickness (mm)	Ply	Grade	Surface	Groove Size (mm)	Groove Centres (mm)
1000/100	2440 x 1216*	12	5	S	Bandsawn	6 x 8 wide	100
1000/100	2440 x 1216*	15	5	S	Bandsawn	6 x 8 wide	100
1000/150	2440 x 1216*	12	5	S	Bandsawn	6 x 8 wide	150
2000/100	2440 x 1216*	12	5	S	Smooth	6 x 8 wide	100
2000/150	2440 x 1216*	12	5	S	Smooth	6 x 8 wide	150
3000	2440 x 1216*	12	5	S	Bandsawn	NO GROOVES	
4000	2400 x 1200	9	5	C	Bandsawn	1.5 x 8 wide	150
5000	2400 x 1200	9	5	S	Bandsawn	1.5 x 8 wide	150
6000	2400 x 1200	9	5	C	Bandsawn	NO GROOVES	
7000	2400 x 1200	9	5	S	Bandsawn	NO GROOVES	

S Grade - specially selected face which has clean appearance

C Grade - solid knots with minor filling

**2440 x 1216 sheet size allows 16mm for weatherproofing shiplap*

Treatment: *AlpineClad panels are H3 treated with LOSP preservative to provide rot protection.*

If requested we can supply the product free of treatment for interior use only.

Veneer Bonding: *Marine type.*



Left and lower left
 This home is clad with AlpineClad Type 1000/100.

Below
 Traditional board and batten is created using AlpineClad Type 3000 with battens overlaid at set spacings.



Above and right
 This accommodation block is constructed with AlpineClad Type 3000 with battens overlaid.



Above Millbrook Resort showing AlpineClad 1000/100
Left AlpineClad Type 1000/100 combines with unusual bay window for modern effect.

AlpineClad

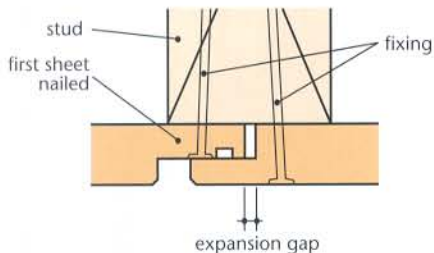
AlpineClad 1000/100

AlpineClad

Fixing

- Place shiplap facing away from prevailing wind
- Studs at 600mm centres
- Two rows of dwangs in 2.4m wall
- Building paper covering frame
- Use 40mm flathead galvanised nails
- Areas exposed to marine conditions consult nail manufacturers for recommendation
- Do not fasten closer than 7mm from edge of sheet
- Fasten at 150mm around edge of sheet and 200mm on intermediate dwangs and studs
- On lap edge fasten through full thickness of sheet behind the lap
- Ensure bottoms of sheets are at least 150mm clear of earth or 100mm clear of paving
- Prior to fixing paint or stain exposed edges, bottom and overhanging sheet edges as well as laps
- 9mm cladding does not have weatherproofing lap so it is necessary to use sealant and or batten covering strip. Ensure when butting sheets to leave 2-3mm expansion gap

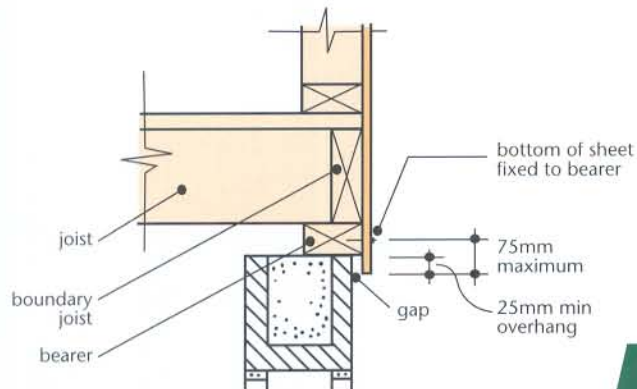
Sheet positioning and fixing



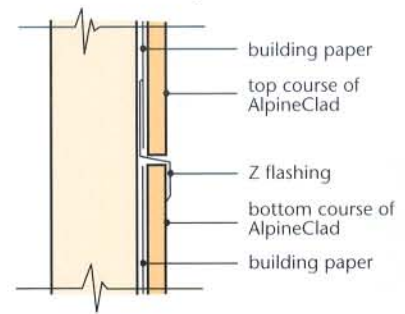
Finishing/Durability

- It is necessary to protect wood with coating with quality paint/stain system following manufacturer specifications and follow their recommendations on recoating intervals. This will ensure that the cladding lasts several lifetimes.
- Ensure paint has mould inhibitors in it.
- It is preferable to use lighter coloured paints/stains to lessen the effects of the greater expansion and contraction which occurs when using darker shades. The movement may cause sun checking (minute splits) which occur in all timber placed in exterior conditions.
- As with all exterior claddings mould can cause some visual discoloration necessitating some routine cleaning.

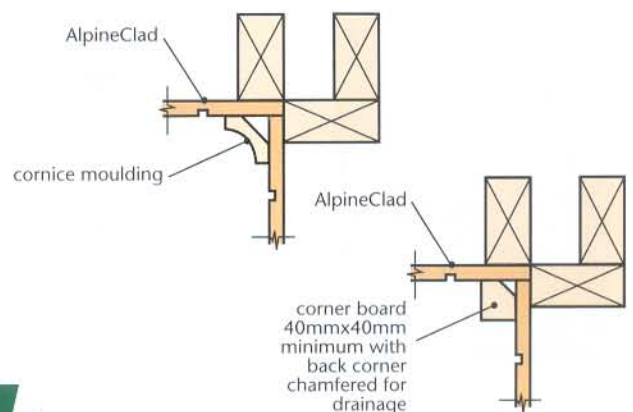
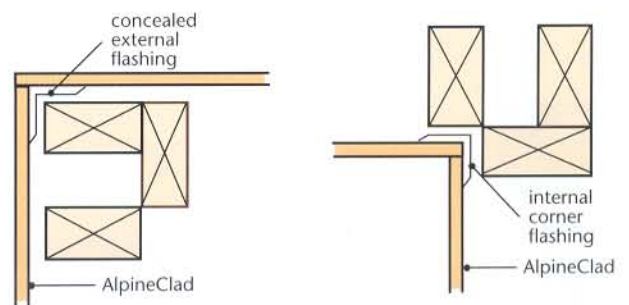
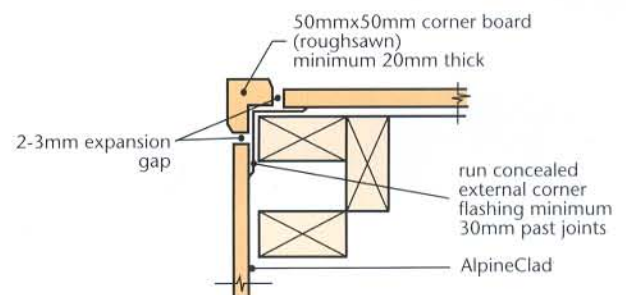
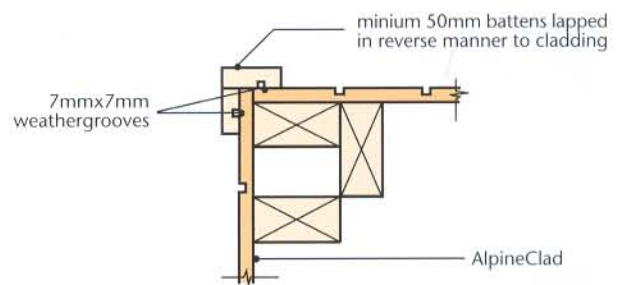
Horizontal framing and sheet overhang



Horizontal joints



Vertical corner joints



INTERNATIONAL PANEL & LUMBER (WEST COAST) LTD
 3 Trickies Road, Greymouth, New Zealand, PO Box 179
 Telephone 03-762 6759, Facsimile 03-762 6789,
 Freephone 0800 650 801, Freefax 0800 650 802, Email tuffply@xtra.co.nz